

CLEVELAND, OHIO - PROPERTY DETAILS



DIRECTIONS

From I-71, I-77 or I-90 exit East 9th Street/Downtown (Northbound). Go to Chester Avenue, turn right. Proceed to East 12th Street, turn left. The hotel is located on the right-hand side in Reserve Square.



LOCATION

- Centrally located Downtown at Reserve Square. Easy access to Interstates 71, 77 and 90. Thirteen miles from Cleveland Hopkins Airport and within walking distance of favorite local attractions.

TRANSPORTATION

- Rapid Transit System, serving east and west Cleveland and Cleveland Hopkins Airport, departs from nearby Tower City on Public Square. Limousine and taxi services are also available. Courtesy shuttle within 2-mile radius of hotel, subject to availability.

ACCOMMODATIONS

- Highrise hotel, spacious two-room suites, including:
 - 130 king suites
 - 122 double/double suites
 - 4 two-bedroom suites
 - 3 wheelchair accessible suites
 - 2 presidential suites
 - smoking & non-smoking suites available

SUITE FEATURES

- Private bedroom with one king size or two double beds.
- Separate living room with sofa bed and well-lit dining/work table.
- Refrigerator, microwave, coffeemaker and complimentary coffee.
- Two remote control HD flat screen televisions with cable and in-suite movies.
- Two telephones with voice mail.
- Wireless high-speed Internet access.
- Iron, ironing board, hair dryer and clock radio with MP3 connection.

RECREATION FACILITIES

- Health club facilities include heated indoor pool, lighted outdoor tennis court, saunas, exercise/weight room, sundeck and whirlpool.
- Metroparks, lake activities and golf nearby.

SERVICES

- Valet or self-parking available at daily rates.
- Complimentary weekday morning USA Today®, gift shop, wheelchair accommodations, laundry/room service, EmbassyDirect™ Registration Kiosk and express checkout.
- 24-hour self-serve business center.
- Car rental desk.

DINING AND ENTERTAINMENT

- American Bar & Grill* offers an inviting, upscale, yet casual environment with indoor or patio seating. Serves lunch and dinner with a limited menu available all day in the lounge.
- Complimentary, cooked-to-order breakfast served each morning.
- Manager's Reception each evening featuring your favorite beverages[†] with snacks in our atrium.



EMBASSY SUITES®

Cleveland - Downtown

1701 East 12th Street

Cleveland, OH 44114-3206

Tel: 216-523-8000 Fax: 216-523-1698

www.clevelanddowntown.embassysuites.com

For Reservations call the hotel directly or

Nationwide call 1-800-EMBASSY

Or visit our web site at

www.embassysuites.com

In Mexico call: 01-800-003-1400

For meeting information call Hilton Direct, 800-321-3232

Chain Code ES:

SABRE 23541 / APOLLO 70612

WORLDSPAN 4317 / AMADEUS CLEG36

The Hilton Family

Hilton HHonors®
Points & Miles

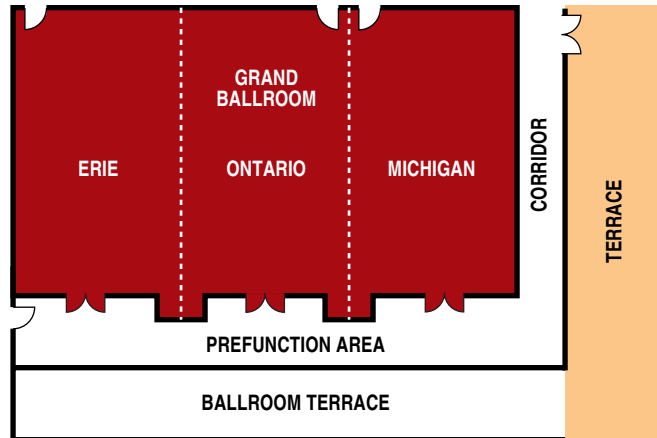


NEWLY REMODELED

[†]Subject to State and Local Laws. Must be of legal drinking age. Hilton HHonors membership, earning of Points & Miles, and redemption of points are subject to HHonors Terms and Conditions. © 2007 Hilton Hospitality, Inc.

CLEVELAND, OHIO - MEETING AND BANQUET LAYOUT

MEETING SPACE FLOOR PLANS



MEETING SPACE CAPACITIES

Room	Square Feet	Dimensions	Ceiling Height	Reception	Banquet	Theater	Class Room	U-Shape	Conference	Hollow Square
Grand Ballroom	2,160	60' x 36'	10'	200	180	225	100	50	–	60
Michigan	720	20' x 36'	10'	70	60	60	40	25	25	30
Ontario	720	20' x 36'	10'	70	60	60	40	25	25	30
Erie	720	20' x 36'	10'	70	60	60	40	25	25	30
Huron Board Room	384	24' x 16'	10'	–	12	–	–	–	12	–
Superior Board Room	384	24' x 16'	10'	–	12	–	–	–	12	–
Renaissance Room	1,113	26' x 42'	10'	80	60	60	40	30	35	36
Salon A, B, C, D	825	33' x 25'	8'	50	40	50	20	20	25	25
Atrium	3,200	50' x 90'	12' 6"	250	200	250	–	–	–	–
Terrace	2,300	70' x 35'	–	200	200	–	–	–	–	–

LOCAL ATTRACTIONS

- Within walking distance of Cleveland's Rock and Roll Hall of Fame & Museum, Tower City Center, the world famous Playhouse Square, the Flats, Jacobs Field, Quicken Loans Arena and Great Lakes Science Center.

MEETING GUARANTEE

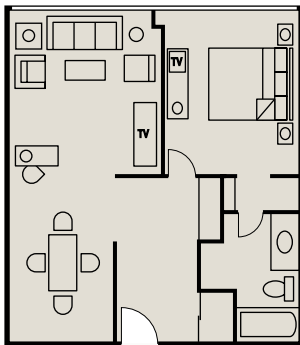
- Our Meeting Guarantee ensures that we meet your requirements for a quality, productive meeting. If any items specified in your signed contract are not fulfilled properly, you will be promptly compensated or credited.

MEETING SPACE INFORMATION

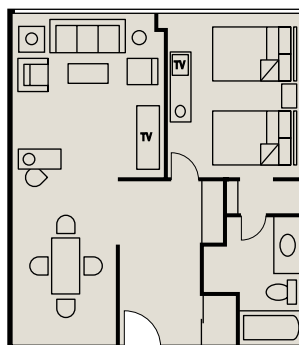
- Over 10,000 square feet of flexible meeting/banquet space.
- Largest single room capacity is 250 people.

SUITE CAPABILITIES

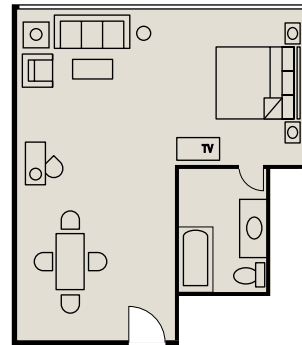
- Our standard guest suite, with built-in features and well-lit work space, provide an excellent small meeting room.



King Suite
(approximately 800 sq. feet)



Double-Double Suite
(approximately 800 sq. feet)



One-room Suite
(approximately 400-500 sq. feet)