

DOUBLETREE GUEST SUITES®

HOUSTON BY THE GALLERIA



DOUBLETREE GUEST SUITES HOUSTON, TEXAS

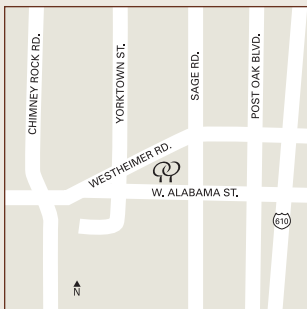
LOCATION

The Doubletree Guest Suites Houston by the Galleria is located

in the heart of the thriving Uptown/Galleria area, famous for its world-class shopping and entertainment venues. The hotel is within a block of the Galleria mall, featuring 350 fine stores and restaurants. Only minutes from Houston's Central Business District, the Texas Medical Center, George R. Brown Convention Center, Reliant Center and an easy ride to both Houston Intercontinental and Hobby Airports.

MEETING FACILITIES & SERVICES

- More than 10,000 total square feet of flexible meeting and banquet space
- 12 meeting rooms to accommodate 10-200 guests
- High-speed Internet access in all meeting rooms
- State-of-the-art audiovisual equipment



Doubletree Guest Suites Houston by the Galleria
5353 Westheimer Road
Houston, TX 77056
Dial Direct: (713) 961-9000
Fax: (713) 877-8835

www.houstonsuites.doubletree.com
1-800-222-TREE

FACILITIES & SERVICES

- 335 one- and two-bedroom suites
- Non-smoking and accessible rooms available
- Fully equipped kitchens
- Gift shop
- Same-day laundry/valet service
- Multilingual staff
- ATM
- Car rental desk

ALL ROOMS FEATURE

- Sweet Dreams® by Doubletree sleep experience
- High-speed Internet access with remote printing capability
- Two phones with data ports and voicemail
- Sweet Dreams alarm clock radio with MP3 connectivity
- Cable TV with pay-per-view movies and complimentary HBO®
- Living area with sleeper sofa
- Iron and ironing board
- Hairdryer
- Coffemaker with complimentary coffee and tea
- Individual climate control
- Electronic door locks
- USA Today® delivered each weekday morning

DINING & ENTERTAINMENT

- McKinley's Bar and Grille on-site
- Walking distance to numerous restaurants, from fast food to fine dining
- 24-hour suite service available
- Mezzanine Bar

RECREATION

- State-of-the-art fitness center
- Outdoor pool and whirlpool
- Complimentary access to Bally's Total Fitness
- Golf course, tennis courts, jogging trail and rollerblading nearby

SURROUNDING ATTRACTIONS

- Galleria Mall - 1 Block
- Houston Museum District - 7 miles
- Houston Medical Center - 7 miles
- Minute Maid Park - 8 miles
- Toyota Center - 8 miles
- George R. Brown Convention Center - 8 miles
- Reliant Center - 8 miles
- Houston Theatre District - 9 miles
- Space Center Houston - 29 miles
- Galveston Island - 56 miles

HILTON HHONORS®

- Hilton HHonors is the only hotel guest reward program that lets you earn both hotel points and airline miles for the same stay at more than 2,700 hotels worldwide.
- With the Hilton HHonors Event Planner program, Event Planners can earn Points & Miles® for qualifying events. Ask your sales person for details.



Hilton HHonors®
Points & Miles®

Warm chocolate chip cookies await you at over 160 Doubletree locations in the USA, Canada and Latin America.

The Hilton Family

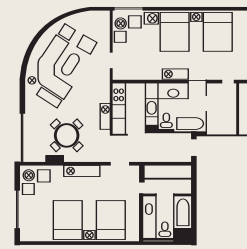
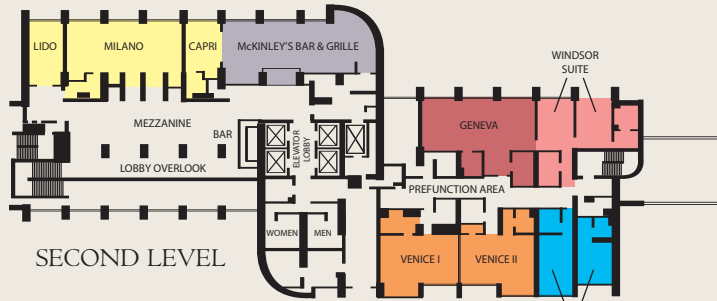
The Hilton HHonors® Event Planner bonus is valid for new event bookings only and is awarded at the discretion of the hotel and may not be awarded on all group business events. Other restrictions may apply. For complete Event Planner Terms and Conditions, visit hiltonhonor.com Hilton HHonors® membership, earning of Points & Miles® and redemption of points are subject to HHonors Terms and Conditions. © 2006 Hilton Hospitality, Inc.



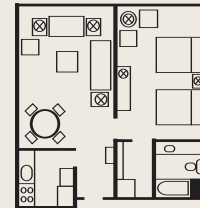
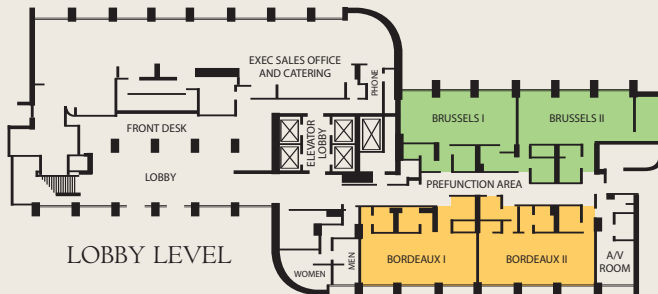
DOUBLETREE GUEST SUITES®

HOUSTON BY THE GALLERIA

MEETING AND BANQUET FACILITIES AND CAPACITIES



2-BEDROOM SUITE
1,280 SQ. FT.



1-BEDROOM SUITE
840 SQ. FT.

NAME OF ROOM	Sq. Ft.	Dimensions	Rounds	Reception	C/R	Theater	Conference	U-Shape	Hollow Rectangle
Brussels I	780	20' x 39'	50	50	30	70	30	25	25
Brussels II	780	20' x 39'	50	50	30	70	30	25	25
Brussels I & II	1,560	20' x 39'	120	100	85	175	60	50	50
Bordeaux I	780	20' x 39"	50	50	30	70	30	25	25
Bordeaux II	780	20' x 39'	50	50	30	70	30	25	25
Bordeaux I & II	1,560	20' x 78"	120	100	85	175	60	50	50
Geneva	780	20' x 39'	60	50	30	60	30	25	25
Venice I	540	20' x 27'	40	40	25	30	20	20	20
Venice II	540	20' x 27'	40	40	25	30	20	20	20
Venice I & II	1,080	20' x 54'	80	80	60	100	40	40	40
Cardiff*	252	12' x 21'	-	-	-	-	10	-	-
Windsor*	252	12' x 21'	-	-	-	-	10	-	-
Lido	260	20' x 13'	20	10	-	-	10	10	10
Milano	800	20' x 40'	60	100	60	75	50	40	40
Capri	260	20' x 13'	20	10	-	-	10	10	10
Lido/Milano/Capri	1,320	20' x 66'	120	150	85	150	60	50	50
McKinley's Bar & Grille	900	20' x 45'	80	100	-	-	-	-	-
Lido/Milano/Capri/McKinley's	2,220	20' x 111'	200	250	-	-	-	-	-
Mezzanine	1,482	26' x 57'	80	125	-	-	-	-	-

*Windsor and Cardiff are executive boardrooms with connecting bedrooms. Dimensions do not include the connecting bedrooms.