



LOCATION

The Doubletree Hotel Commerce, situated 10 minutes south of downtown Los Angeles off I-5 between Disneyland[®] and Universal Studios[®], offers contemporary Southern California accommodations in the perfect location for business, vacation, shopping, or special occasion travel. Our beautiful hotel, is close to the Staples Center, L.A. Convention Center and is less than 30 minutes from either Burbank (BUR) or Los Angeles (LAX) International Airport.

RECREATION

- Doubletree Fitness by Precor - Cardio equipment with personal TV screens, free weights and room to stretch
- Outdoor Swimming Pool
- Rio Hondo Golf Course and Commerce Aquatic center nearby



Doubletree Hotel
Los Angeles/Commerce
5757 Telegraph Road
Commerce, CA 90040
Main Tel: (323) 887-8100
Fax: (323) 887-4343
www.commerce.doubletree.com
1-800-222-TREE

FACILITIES & SERVICES

- 201 Guest Rooms (20 suites)
- 24-hour Business Center
- Complimentary High-Speed Wireless Internet access in hotel public areas
- Multilingual Staff
- Same-day Valet Dry Cleaning and Laundry Service
- Complimentary Shuttle Service within a 5-mile radius
- Gift Shop
- Safe Deposit Boxes
- Complimentary Parking

ALL ROOMS FEATURE

- Sweet Dreams[®] by Doubletree Sleep Experience
- High-Speed Wireless Internet access and remote guestroom printing
- Television with On-Demand Movies, Premium Channels (SHOW[®], CNN[®], ESPN[®])
- Two Telephones with Voicemail and Dataport
- Individual climate control
- Sweet Dreams Alarm Clock with MP3 Connectivity
- Enjoy Complimentary Coffee and Tea in the privacy of your room by celebrity Chef Wolfgang Puck
- Large Executive Desk with adjustable lamp
- USA Today[®] delivered each Weekday Morning

DINING & ENTERTAINMENT

- Terranova is California contemporary cuisine fused with al fresco bistro dining. Open for Breakfast, Lunch and Dinner.
- Room Service available until 11PM, 7 days a week

e-EVENTS

Plan your next small meeting or event online with e-Events. You'll be able to book up to 25 guest rooms, meeting space, food and beverage, and audio/visual equipment. To get started, visit www.doubletree.com/eevents.

SURROUNDING ATTRACTIONS

- Rio Hondo Gold Club and Commerce Aquatic Center nearby
- Citadel Outlet Mall - 1 block
- Commerce Casino - 2 blocks
- Staples Center[™] - 8 miles
- Los Angeles Convention Center - 8 miles
- Hollywood - 10 miles
- Kodak Theatre - 10 miles
- Griffith Observatory[™] - 12 miles
- Los Angeles Zoo - 14 miles
- Beverly Hills - 15 miles
- Knotts Berry Farm[®] - 15 miles
- Universal Studios[®] - 18 miles
- Disneyland[®] - 19 miles
- Beaches - 20 miles
- Santa Monica Pier[™] - 20 miles
- J. Paul Getty Center Museum - 23 miles

(POG) PERSONALIZED ONLINE GROUP WEB PAGE

POG provides your guests with a Personalized Online Group Web Page that is customized for their event. This will allow group attendees to book their reservations online, 24/7. Ask your sales person for details.

HILTON HHONORS[®]

- Points & Miles[®] and No Blackout Dates. Hilton HHonors is the only hotel guest reward program to offer it all, at more than 3,000 hotels worldwide.
- With the Hilton HHonors Event Planner program, event planners can earn Points & Miles[®] for qualifying events. Ask your sales person for details.

Hilton HHonors[®] Event Planner bonus is valid for new event bookings only and is awarded at the discretion of the hotel and may not be awarded on all group business events. Other restrictions may apply. For complete Event Planner Terms and Conditions, visit hiltonhonor.com. Hilton HHonors[®] membership, earning of Points & Miles[®] and redemption of points are subject to HHonors Terms & Conditions.

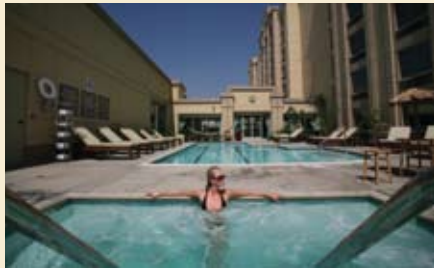
© 2009 Hilton Hotels Corporation



MEETING & BANQUET FACILITIES



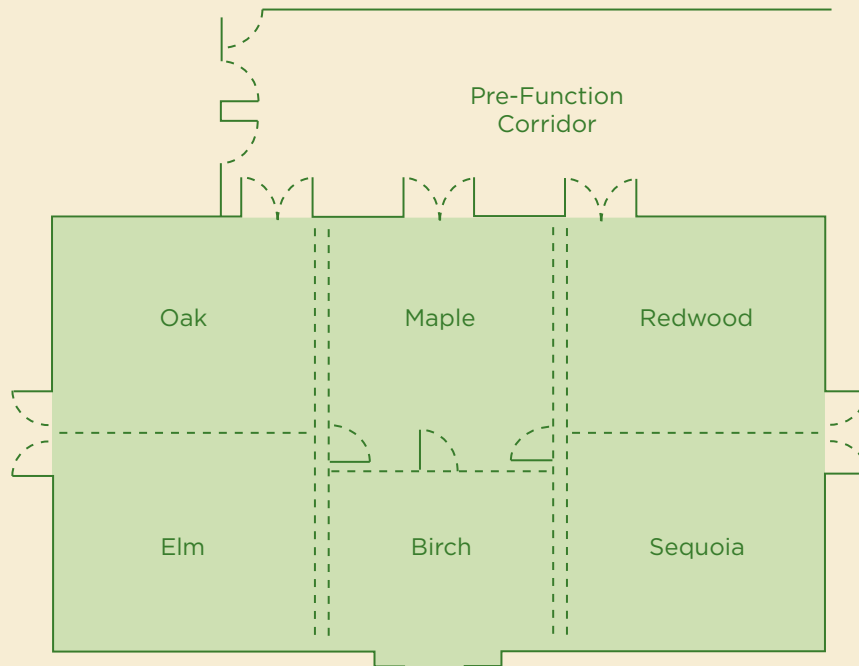
TERRANOVA RESTAURANT



SWIMMING POOL

MEETING ACCOMMODATIONS

- More than 5,760 square feet of flexible Meeting and Banquet space
- High-speed Internet Access available in all meeting rooms
- State-of-the-art Audiovisual equipment available
- Complete Banquet and Conference services staff



Name of Room	Total Sq. Ft.	Dimensions	Classroom	Theater	Banquet	U-Shape
Grand Tree Ballroom	5,640	94' X 60'	350	626	450	-
Redwood	1,020	34' X 30'	50	100	80	35
Sequoia	1,020	34' X 30'	50	100	80	35
Redwood/Sequoia	2,040	34' X 60'	100	250	160	-
Maple	864	24' X 36'	50	60	50	35
Birch	576	24' X 24'	50	40	40	25
Maple/Birch	1,440	24' X 60'	100	100	120	-
Oak	1,080	36' X 30'	50	100	80	35
Elm	1,080	36' X 30'	50	100	80	35
Oak/Elm	2,160	36' X 60'	125	250	160	-